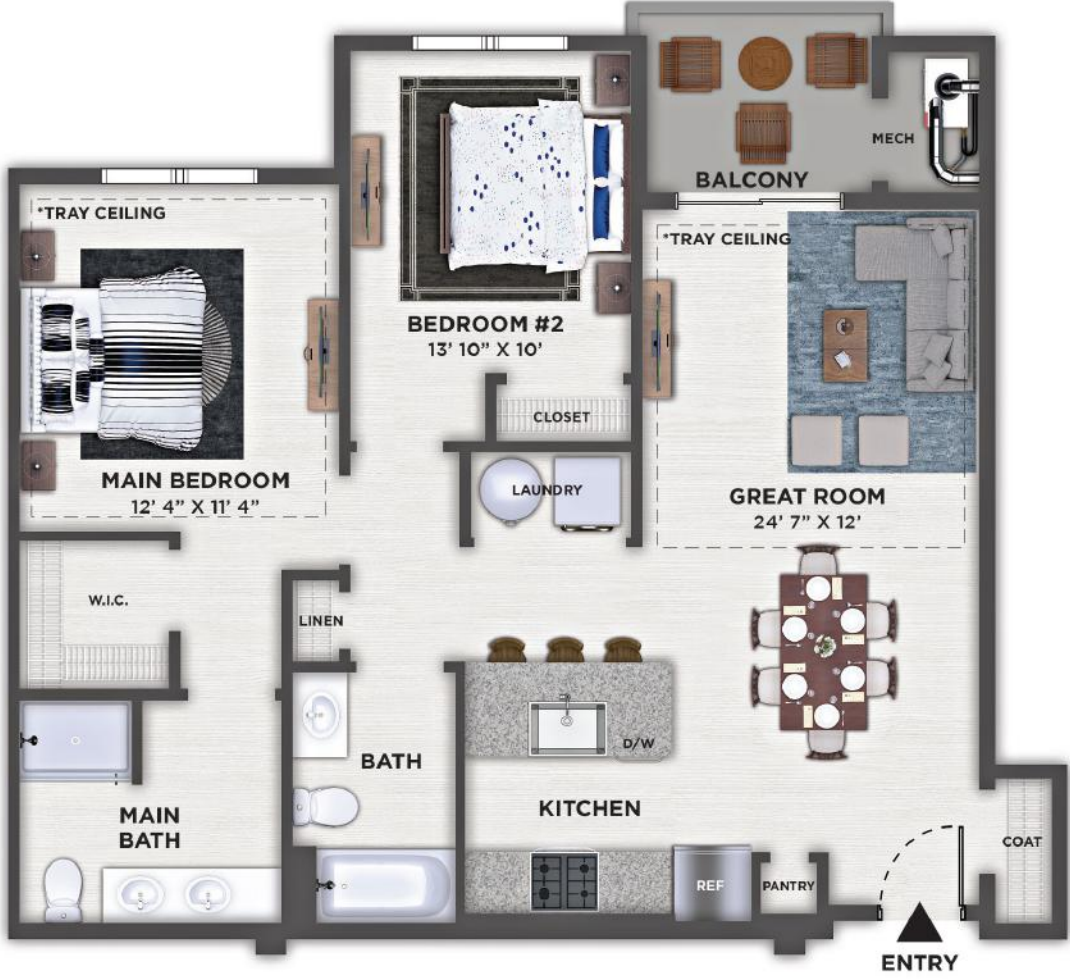


ADAMS

UNIT 3206



TWO BEDROOM - 2 BATH
931 SQ. FT.

*Vaulted/Tray Ceiling
on Top Floors Only

PRESIDENTIAL
GARDENS
AT MANCHESTER

*Floorplan details vary from residence to residence and are not necessarily built exactly as indicated. Continuing a policy of research and development, Presidential Gardens at Manchester, LLC must reserve the right to make modifications in design, terms and products without notice or obligations. The design and documents of Presidential Gardens Apartments are copyrighted. We have enforced and will continue to enforce our federal copyrights to protect our investment. Presidential Gardens at Manchester, LLC is not responsible for any errors and/or omissions. All sizes and sq. ft. are approximate and for identification purposes only. Furniture is shown for illustrative purposes only.